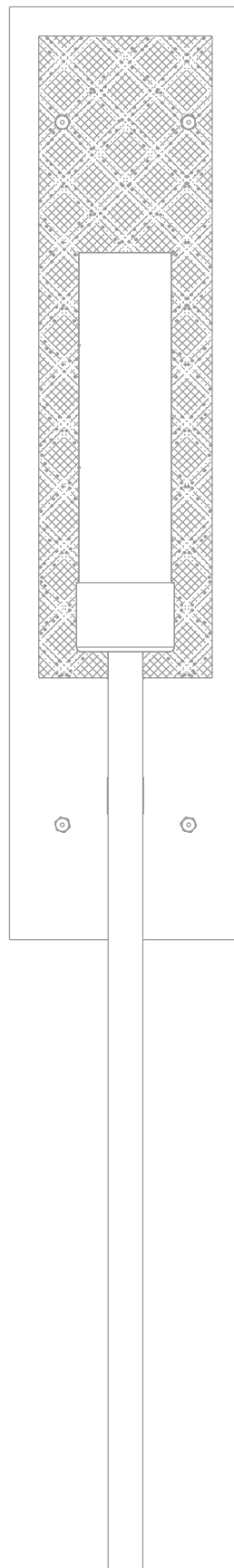




Lighting

Custom Project



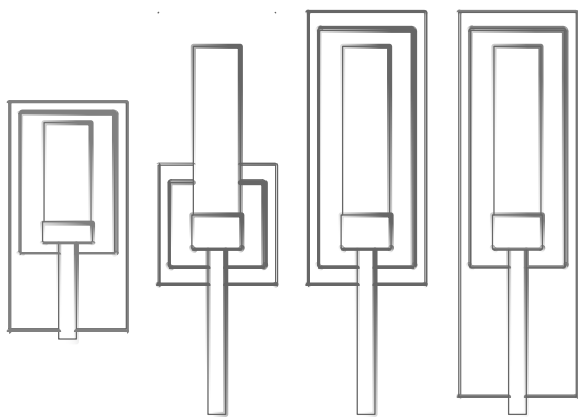
Cacapon State Park

# Concept to Creation

## Custom Wall Sconce Cacapon Resort State Park Lodge - Berkeley Springs, WV

G Lighting was tasked to create custom lighting elements that compliment the natural beauty of this West Virginia State Park, balancing the look of natural sedimentary rock and man made materials found in storied hunting lodges.

\*LED lighting

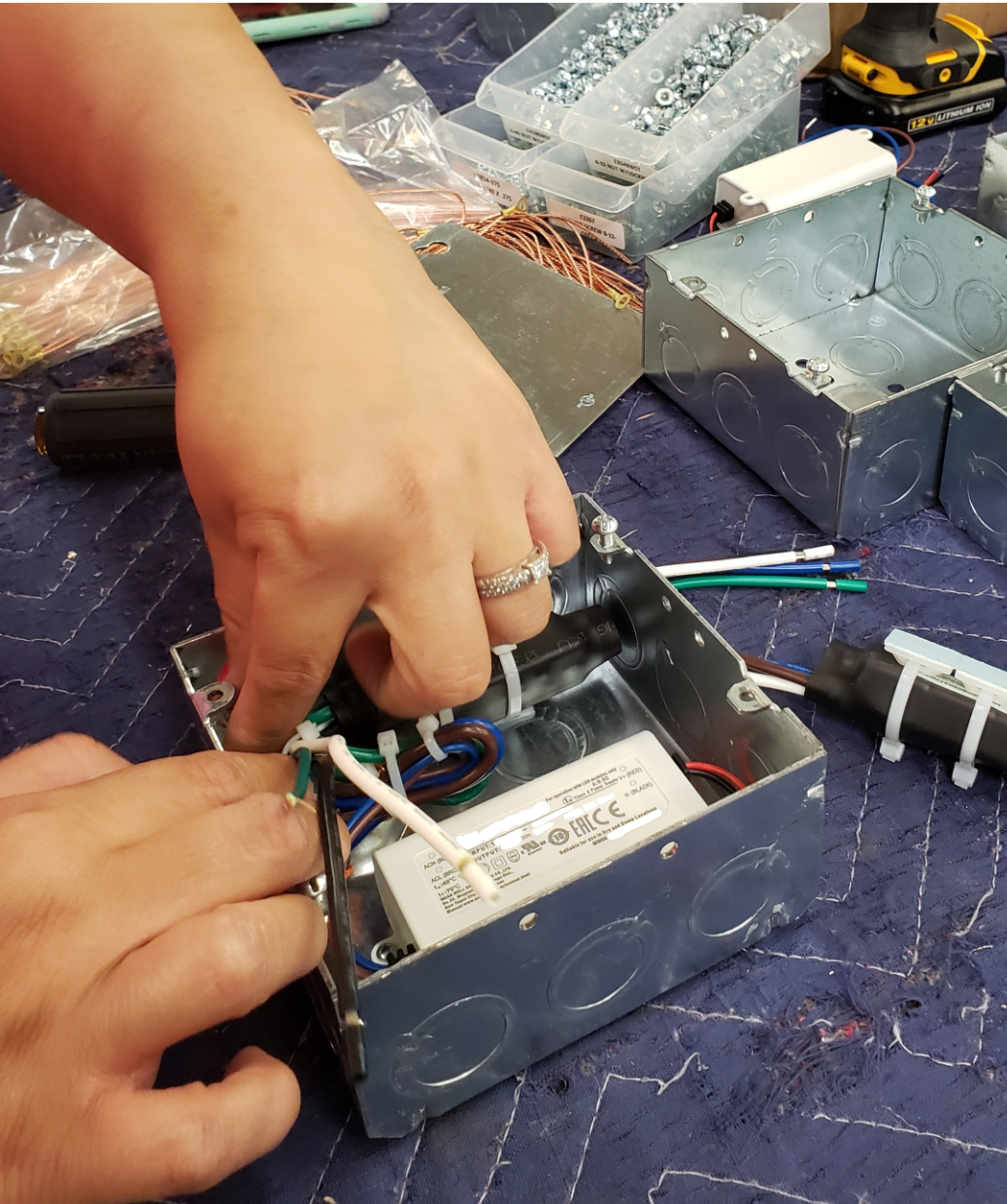


sketching iterations





We take great pride in having the ability to collaborate with partners. We design, fabricate, and assemble all of our products in our home city of St. Louis, Missouri. Made in the USA is not just a sticker we apply to our products. It is a symbol of pride we put into all of our fixtures. Since 1908 we have been building products that will transform a great space into an amazing space.



established in 1908



**CACAPON** SCONCE  
B-87032

Custom Cacapon Project 2





**CACAPON** SCONCE  
B-87027



**CACAPON** PENDANT  
B-87024



**CACAPON** SCONCE  
B-87027





**CACAPON** PENDANT  
B-87028



**CACAPON** PENDANT  
B-87023

established in 1908



**CACAPON** SCONCE  
B-87030

Custom Cacapon Project





**CACAPON** PENDANT  
B-87034



**CACAPON** PENDANT  
B-87036



**CACAPON** PENDANT  
B-87037



## NOTES

This image shows a single sheet of white paper with horizontal ruling lines. The lines are evenly spaced and run across the width of the page. There are no margins, text, or other markings on the paper.

All products are ARRA compliant and ETL listed for US and Canada. G Lighting reserves the right to modify existing designs to improve appearance or function.





## PAST, PRESENT & FUTURE

Gross Gas and Electric Fixture Company was founded in 1908 by Edward Linton Gross in St. Louis, Missouri. In 1914 we continued operations as Gross Chandelier Company. During World War II, Gross Chandelier aided the war effort by manufacturing aircraft parts for the military. After the war, Gross resumed normal operations. The company has moved several times throughout it's history, always keeping the manufacturing plant in the St. Louis area.

## MISSION STATEMENT

Our mission is to provide quality architectural lighting products and personal service to our clients through project completion. We take pride in our American made products and our facilities are located in Saint Louis Missouri.

In addition to our catalog fixtures, we offer modifications and unique custom capabilities, including traditional and restoration solutions for any scale project.

## TECHNOLOGY

To meet the demanding needs for energy conservation we are incorporating the latest advances in LED technology and energy efficient lamping into our designs. We are excited to be lighting the way, merging technology with art and design.



9777 Reavis Park Dr. St. Louis, MO 63123

u. [glighting.com](http://glighting.com) p. 314.631.6000

tf. 800.331.2425 e. [sales@glighting.com](mailto:sales@glighting.com)

