

BASILONE

Indoor LED Pendant



9777 Reavis Park Drive
St. Louis, MO 63123
800.331.2425 or 314.631.6000

sales@lighting.com www.lighting.com

GENERAL SPECIFICATION

LED: High efficiency LEDs.

LED Dimming: 1% 0-10V dimming standard.

Body: .050 spun aluminum cap. Black perforated decorative ring. Driver integral.

Acrylic: Acrylic is UL-94 HB Flame Class rated.

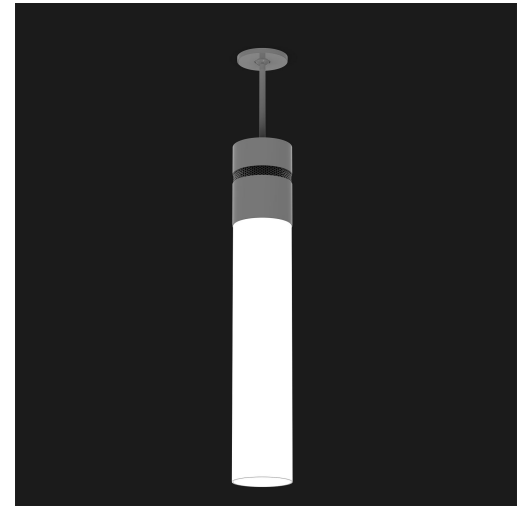
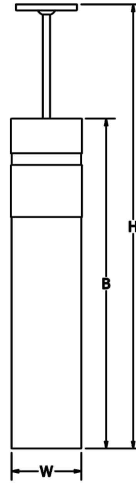
Cable Hanger Option: Standard 72" cable and white cord for on-site adjustability.

Canopy: Matches fixture finish. Low profile canopy may be mounted on flat or sloped ceilings up to 40°.

Finish: Highly durable oven cured no VOC premium powder coat.

Modifications: Consult factory for lamping or cluster options.

Surge Protection: External surge protector provided as standard.



SAMPLE CATALOG NUMBER:						
GL-6000-	A5-	W-	NSN-	1-	A-	038
MODEL NO.	LAMPING	ACRYLIC	FINISH	HANGER	OPTION(S)	OVERALL HEIGHT
GL-6000 W in 6" mm 150 B in 28 1/2" mm 725 H in 38" mm 965 12lbs 7.4kg	A0. LED30 A5. LED35 A4. LED40	Standard: S Satin White Acrylic is UL-94 HB Flame Class rated.	Standard: BLK -Black BL -Blue GR -Gray LG -Light Gray BE -Beige PAB -Antique Brass PA -Painted Aluminum PTC -Painted Copper WH -White DBZ -Dark Bronze NSN -New Satin Nickel BRN -Brown RD -Red CH -Champagne RG -Reed Green SG -Sungold GM -Gun Metal POR -Oil Rubbed Bronze PG -Pine Green DO -Deep Orange PV -Purple Violet NB -Navy Blue Textured Powder TLV -Light Verdigris TWH -Textured White TBL -Textured Black TS -Textured Silver TBZ -Textured Bronze TST -Stone	1. Stem 2. Cable Standard White Power Cord	A. No Options BC. Black Cord Fixture supplied with black power cord. LC. 150" Cord & Cable Fixture supplied with 150" of cable and standard white cord or optional black cord. Hanger option 2 only. EL. Emergency LED Must be remotely mounted in a controlled environment with an area temperature range of 32°-131°F. Specify 120 or 277 voltage.	Stem mount only - Specify overall height in inches. Standard overall height shown by model no.
GL-6001 W in 6" mm 150 B in 40 1/2" mm 1030 H in 50" mm 1270 20lbs 9kg	A0. LED30 A5. LED35 A4. LED40					
GL-6002 W in 6" mm 150 B in 57" mm 1448 H in 68" mm 1702 30lbs 11.3kg	A0. LED30 A5. LED35 A4. LED40					

Fixtures over 50 lbs require reinforced junction box

Light Source Definition

Lamp	LED	Rated Life Hrs	Delivered Lumens	Kelvin	CRI
LED30	(1) 17W LED	50000	1166	3000	90
LED35	(1) 17W LED	50000	1166	3500	90
LED40	(1) 17W LED	50000	1166	4000	90

Universal Voltage unless otherwise specified.

