

GADSDEN

Outdoor Sconce



9777 Reavis Park Drive
St. Louis, MO 63123
800.331.2425 or 314.631.6000

sales@glighting.com www.glighting.com

GENERAL SPECIFICATION

LED: High efficiency +90CRI mid-power LEDs are field serviceable.

LED Dimming: Standard 1% 0-10V dimming. TRIAC, DALI, or DMX available upon request.

Body: Spun .050 aluminum.

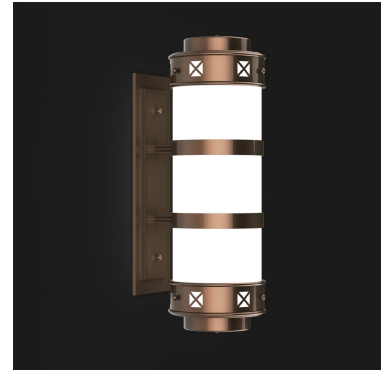
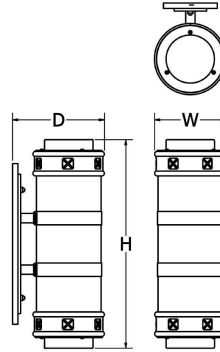
Acrylic: Seamless acrylic is UL-94 HB Flame Class rated.

Finish: Highly durable oven cured no VOC premium powder coat.

Modifications: Consult factory for lamping options.

Surge Protection: External surge protector provided as standard.

Listing: Fixture ETL listed for wet locations.



SAMPLE CATALOG NUMBER: GL-5300-				
MODEL NO.	LAMPING	ACRYLIC	FINISH	OPTION(S)
GL-5300 W in 6 5/8" mm 170 H in 20" mm 510 D in 8 1/2" mm 215	L10. 1LED30 L15. 1LED35 L14. 1LED40 L20. 2LED30 L25. 2LED35 L24. 2LED40	Standard: S. Satin White Acrylic is UL-94 HB Flame Class rated.	Standard: Powder Coat BLK- Black BL- Blue GR- Gray LG- Light Gray BE- Beige PAB- Antique Brass PA- Painted Aluminum PTC- Painted Copper WH- White DBZ- Dark Bronze NSN- New Satin Nickel BRN- Brown RD- Red CH- Champagne RG- Reed Green SG- Sungold GM- Gun Metal POR- Oil Rubbed Bronze PG- Pine Green DO- Deep Orange PV- Purple Violet NB- Navy Blue Textured Powder TLV- Light Verdigris TWH- Textured White TBL- Textured Black TS- Textured Silver TBZ- Textured Bronze TST- Stone	A. No Options EL. Emergency LED Remote mount up to 10' from light source in controlled environment with an area temperature range of 32°-131°F. Specify 120 or 277 voltage.

All dimensions are nominal.

Light Source Definition

Code	Total Wattage	Rated CRI	Rated Life Hrs	Delivered Lumens	Kelvin
L10	13	+90	50000	1017	3000
L15	13	+90	50000	1017	3500
L14	13	+90	50000	1017	4000
L20	26	+90	50000	1992	3000
L25	26	+90	50000	1992	3500
L24	26	+90	50000	1992	4000

Universal Voltage unless otherwise specified.

